

[Q53-Q70 Real Network Appliance NS0-520 Exam Questions [Updated 2022



Real Network Appliance NS0-520 Exam Questions [Updated 2022]

NS0-520 Exam Dumps Pass with Updated 2022 NetApp Certified Implementation Engineer - SAN, ONTAP

NO.53 You have finished deploying a Netapp AFF All SAN Array Cluster and want to test the persistent ports feature. In this scenario, how would you accomplish this task?

- * Perform a takeover of a node
- * Disconnect an FCP initiator port
- * Disconnect an FCP target port
- * Disable a SAN LIF

If we don't have OnCommand Insight, then we should not pull out a cable as test because it won't be detected properly.

Doing a planned takeover will meet the requirements asked.

Number	Validation test	Desired result
1	Cable pull and port shutdown to cause path failure: <ul style="list-style-type: none">From the storage controller to the fabric or Ethernet switch	Path faults are detected by OnCommand Insight or by Active IQ Unified Manager; storage volume performance is still within ASA parameters.

25 ONTAP All SAN Array Systems

© 2021 NetApp, Inc. All rights reserved.

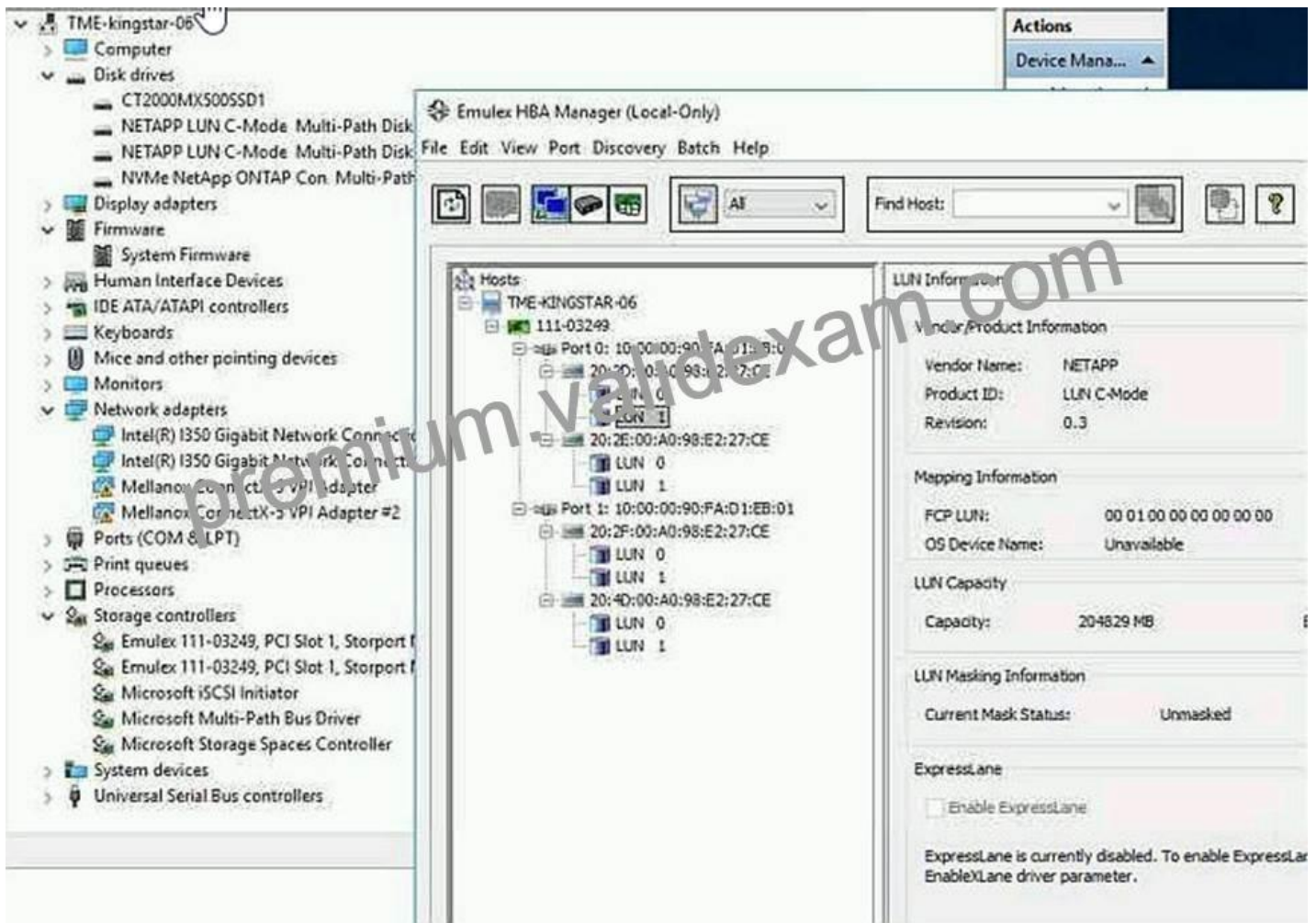
premium.validexam.com

Number	Validation test	Desired result
	<ul style="list-style-type: none">From the host to the fabric or Ethernet switch	
2	Planned takeover and giveback of storage controllers	Storage I/O is not disrupted; storage performance is unaffected; alerts are sent out by using Active IQ Unified Manager and AutoSupport.
3	Unplanned takeover and giveback of storage controllers	Storage I/O is not disrupted; storage performance is unaffected; alerts are sent out by using Active IQ Unified Manager and AutoSupport.

You can find more information on this link:

<https://www.netapp.com/pdf.html?item=/media/10379-tr4515.pdf&v=20217121554> (26)

NO.54 Click the Exhibit button.



Referring to the exhibit, how many LUNs should the server administrator see on the Windows 2016 host?

- * 0
- * 4
- * 2
- * 8

NO.55 Referring to the exhibit, which two actions would you perform to ensure that each host has valid multipathing? (choose two)

```

node      port  link broadcast-domain
-----
Cluster1-01 ala-10 up Storage
Cluster1-02 a2a-10 up Storage

Vserver      Logical  Status  Network  Current  Current Is
Interface    Admin/Oper Address/Mask  Node      Port  idone
-----
Storage_iSCSI
Storage_iSCSI_lif1 up/up 10.10.10.30/24 Cluster1-01 ala-10 true
Storage_iSCSI_lif2 up/up 10.10.10.31/24 Cluster1-02 a2a-10 true

Vserver      Igroup  Protocol  Type  Initiators
-----
Storage_iSCSI vmware  iscsi  vmware  iqn.1998-01.com.vmware:5dfa0d08-9a33-fbc6-abac-94c691140409-59a59ccf
iqn.1998-01.com.vmware:5dfa0efa-8c55-5a44-a125-94c6911407fd-5972503d

Vserver      Tpgroup Name  TSIH Initiator Name
-----
Storage_iSCSI Storage_iSCSI_lif1 1 iqn.1998-01.com.vmware:5dfa0efa-8c55-5a44-a125-94c6911407fd-5972503d
Storage_iSCSI Storage_iSCSI_lif1 2 iqn.1998-01.com.vmware:5dfa0efa-8c55-5a44-a125-94c6911407fd-5972503d
Storage_iSCSI Storage_iSCSI_lif2 1 iqn.1998-01.com.vmware:5dfa0efa-8c55-5a44-a125-94c6911407fd-5972503d
Storage_iSCSI Storage_iSCSI_lif2 2 iqn.1998-01.com.vmware:5dfa0efa-8c55-5a44-a125-94c6911407fd-5972503d
Storage_iSCSI Storage_iSCSI_lif2 3 iqn.1998-01.com.vmware:5dfa0d08-9a33-fbc6-abac-94c691140409-59a59ccf
Storage_iSCSI Storage_iSCSI_lif2 4 iqn.1998-01.com.vmware:5dfa0d08-9a33-fbc6-abac-94c691140409-59a59ccf
6 entries were displayed.
    
```

- * Verify that the VLANs are properly configured on the switches
- * Verify that the VLANs are properly configured on the ONTAP cluster
- * Verify that ALUA is enabled on the switches
- * Verify that ISCSI service is started on the ONTAP cluster

Iscsi is already started, we can not run those commands successfully if the protocol is not started ALUA is enabled on hosts, It is not enabled on switches VLANs are configured on the Netapp and switches, they need to be properly configured on both sides to work correctly You can find more information on this link:

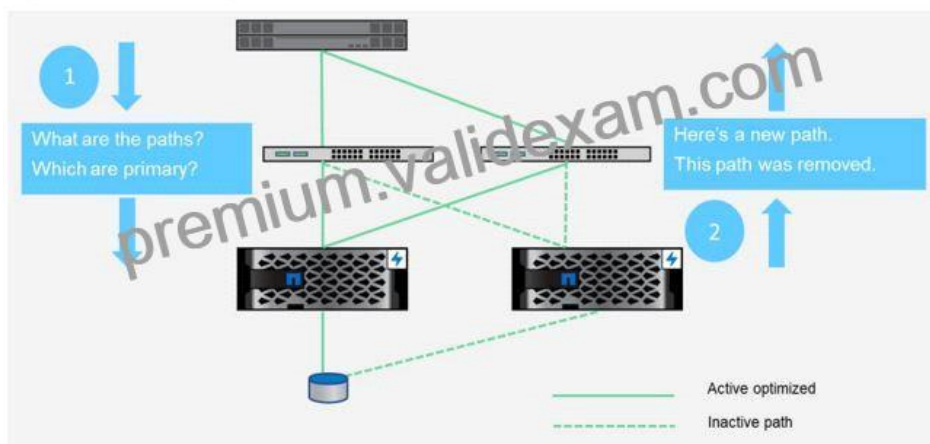
<https://docs.netapp.com/ontap-9/index.jsp?topic=%2Fcom.netapp.doc.dot-cm-nmg%2FGUID-52AE6E9C-13B6-49BA-B030-545C1C7647AC.html>

NO.56 You upgraded your Linux hosts to SUSE Enterprise Linux 15. In this scenario, which two actions should you perform before you test asymmetric namespace access (ANA)? (Choose two)

- * Verify if the NVMe service has started
- * Verify if the LUNs and namespaces are in the same volume.
- * Verify if the version of Netapp ONTAP software is 9.5 or later
- * Verify if there is only one LIF in the SVM

ONTAP 9.5 Introduces ANA

Figure 12) NVMe/FC Storage Failover: ONTAP 9.5 introduces ANA.



<https://www.netapp.com/de/media/10681-tr4684.pdf>

NO.57 The ESX host reports inconsistent performance for iSCSI-based connectivity.

In this scenario, what would cause this problem?

- * The host and storage are connected to different switches.
- * The flow control was disabled on the storage.
- * The hardware initiators were used instead of software.
- * The flow control is enabled on the storage.

NO.58 You have a two node Netapp ONTAP cluster that is hosting FC LUNs for 90 SAN hosts. The hosts are experiencing occasional performance problems and receiving QFULL responses from the cluster nodes. Which action would solve this issue?

- * Increase the queue depth on the target ports
- * Configure additional FC target ports
- * Increase the queue depth on the initiator ports
- * Configure additional FC ports on the hosts

Adding more FC initiators on host will not solve this bottle-neck situation, we can try to increase the queue depth but we need the number of hosts and the number of target ports to calculate it correctly.

We need to add more FC target ports on our storage to keep the load balanced and distributed You can find more information on this link

<https://docs.netapp.com/ontap-9/i/index.jsp?topic=%2Fcom.netapp.doc.dot-cm-sanconf%2FGUID-A055B184-0876-4376-9C75-35FE8C9BE832.html>

NO.59 A database administrator needs to ensure that snapshot copies of database files across multiple LUNs are taken at the same point in time. Which action achieves this outcome?

- * Create each LUN within the same FlexVol volume
- * Create each LUN on the same Fabric Pool aggregate
- * Add each LUN volume to the same snapshot schedule
- * Create each LUN within the same FlexGroup Volume

We can discard Flexgroup because it only works on NAS Protocols.

We can discard LUNs and Aggregates because snapshots are not taken at that level Snapshots are taken at volume level You can find more information on this link:

<https://community.netapp.com/t5/ONTAP-Discussions/can-we-creat-multiple-luns-from-same-volume-on-AFF300/m-p/153049#M34153>

NO.60 Referring to the exhibit, which two LIFs would be optimized paths to LUN /vol/OraDev_Vol/OraDev? (Choose two.)

- * aff_node-01_0g_A
- * aff_node-02_0e_A
- * aff_node-02_0g_A
- * aff_node-01_0e_A

NO.61 Click the Exhibit button.

```
Node02 50:0a:09:81:80:e1:50:b8 20:2e:00:a0:98:e2:27:ce
Host1 20:09:88:94:71:5b:9b:9b 10:00:00:90:fa:d1:ea:f8

---
tme-g630-10:FID128:admin> cfgshow
Defined configuration:
cfg: g630-10 z1-core-tme-rx2530-a-hba1p1; z1-tme-2530-02-hba1;
z1-tme01-2530-RHEL-01-HBA1P2; z2-core-tme-rx2530-a-hba1p1;
z2-tme-2530-02-hba1; z3-core-tme-rx2530-a-hba1p1;
z3-tme-2530-02-hba1; z4-core-tme-rx2530-a-hba1p1;
z4-tme-2530-02-hba1; z1-sqlbprod-e; z-oradb01prod01_e

prodzone:
20:04:d0:39:ea:04:ff:61; 10:00:00:10:9b:17:6c:a5

alias: ASA-A700-N1-2B
20:02:d0:39:ea:04:ff:68
alias: ASA-A700-N2-2B
20:04:d0:39:ea:04:ff:68
alias: core-tme-rx2530-a-hba1p1
10:00:00:10:9b:17:6c:a5

Effective configuration:
g630-10
```

You issue the `cfgshow` command on one of your Brocade switches and notice that there is no zoning listed under the Effective configuration. When you attempt to use the `fcping` command from the initiator to the target, the command fails.

Referring to the exhibit, what are two problems? (Choose two.)

- * The default zone access is set to allow even though zoning is defined.
- * There is no zoning configured, and the default zone's access is set to No Access.
- * There is no alias for either the initiator or the target.
- * There is no zone defined that has both the initiator and target in a common zone.

NO.62 Which formula is appropriate for calculating target port Queue Depth?

- * The number of LIFs using a physical port * 256
- * The sum of the Queue Depth setting for all hosts using a physical port
- * The number of LIFs using the physical port * Maximum Host HBA Queue Depth setting
- * The number of physical ports * 2048

NO.63 While expanding a 200 GB LUN in an ONTAP 9.4 system, the following error is observed:

```
cluster1::*> lun resize -path /vol/lun_vol/lun -size +3T
Error: command failed: New size exceeds this LUN's initial geometry
```

What is the cause of this error?

- * The volume auto-grow is disabled.
- * The LUN reached maximum capacity.
- * The LUN can be expanded up to 10 times its original size.
- * Space reservation is enabled.

NO.64 Which NetApp tool views automated, schedule configuration, and performance data for a customer's SAN from a Web browser?

- * Virtual Storage Console
- * OnCommand Workflow Analyzer
- * Config Advisor
- * Active IQ

NO.65 What is a prerequisite for enabling SCSI UNMAP support for SAN attached hosts?

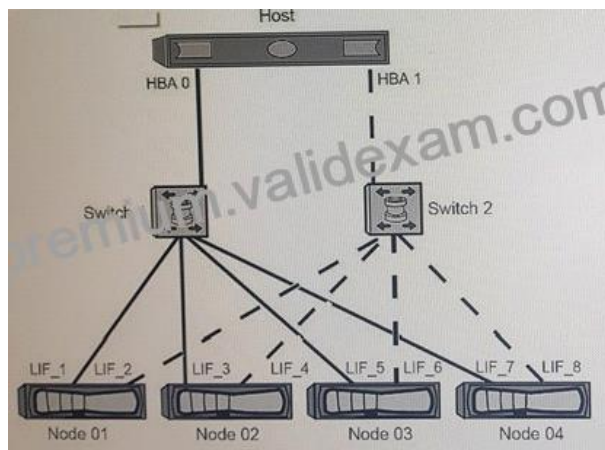
- * The space-slo parameter must be set to semi-thick.
- * The space-slo parameter must be set to none.
- * The space-allocation parameter must be enabled.
- * The LUN mapping must be deleted.

NO.66 An administrator is asked to configure NVMe on an ONTAP 9.5 cluster for host access.

Which three steps must the administrator perform to accomplish this task? (Choose three.)

- * Create a namespace.
- * Provision a subsystem.
- * Configure the FC port.
- * Gather the IQN from the host initiator software.
- * Gather the NQN from the host system.

NO.67 Exhibit.



The host in the exhibit is connected to a 4-node ONTAP SAN using dual-fabric implementation. LUNs have been mapped LUN through all available UFs on nil (our nodes. Switch 2 is powered off for high-availability testing.

How many paths per LUN would you expect the host to see in this scenario?

- * 2
- * 6

- * 4
- * 8

NO.68 Click the Exhibit button.

```
switch# show npv status
```

```
npiv is enabled
```

```
External Interfaces:
```

```
=====
```

```
Interface: ext17, FCID: 0x000000, State: Failed(neighbor on the upstream port is not fabric)
```

```
Number of External Interfaces: 3
```

premium.validexam.com

An administrator is trying to configure a multiple-hop Cisco MDS switch and is receiving the error shown in the exhibit.

In this scenario, which action will solve this problem?

- * Configure the physical link of interface ext17 as an F_Port.
- * Configure the external interface to a different virtual SAN (VSAN) on both ends.
- * Connect the external link to a Cisco MDS switch.
- * Turn N_Port ID virtualization (NPIV) off.

NO.69 Which path selection policy is used by Windows Servers using NetApp LUNs that are greater than 2 TB?

- * Least Queue Depth
- * Round Robin
- * Round Robin with Subset Policy
- * Least Weighted Paths

NO.70 You are asked to increase the size of your existing 4-node FAS8060 cluster running ONTAP 9.7 software with four additional AFF A700 nodes.

Which tool enables you to confirm that this will be a valid addition?

- * Active IQ OneCollect
- * Hardware Universe (HWU)
- * Active IQ Config Advisor
- * Active IQ

Network Appliance NS0-520 Exam Syllabus Topics:

TopicDetailsTopic 1- Demonstrate knowledge of troubleshooting tasks- Identify environmental and physical considerationsTopic 2-

ONTAP SAN implementation and configuration- Describe switch configuration concepts
Topic 3- ONTAP SAN implementation testing and troubleshooting- Identify a detailed inventory of SAN components
Topic 4- Identify that all prerequisites for the installation of NetApp® system, hosts, and FCP- FCoE switches are verified- Demonstrate knowledge of clustered storage system node configuration tasks

NetApp NS0-520 Exam Certification Details:

Duration 90 minutes
Passing Score 62%
Exam Code NS0-520 NCIE SAN Specialist, ONTAP
Number of Questions 60
Exam Price \$150
USDE
Exam Name Implementation Engineer SAN Specialist, ONTAP

NS0-520 Exam Dumps, NS0-520 Practice Test Questions: <https://www.validexam.com/NS0-520-latest-dumps.html>]