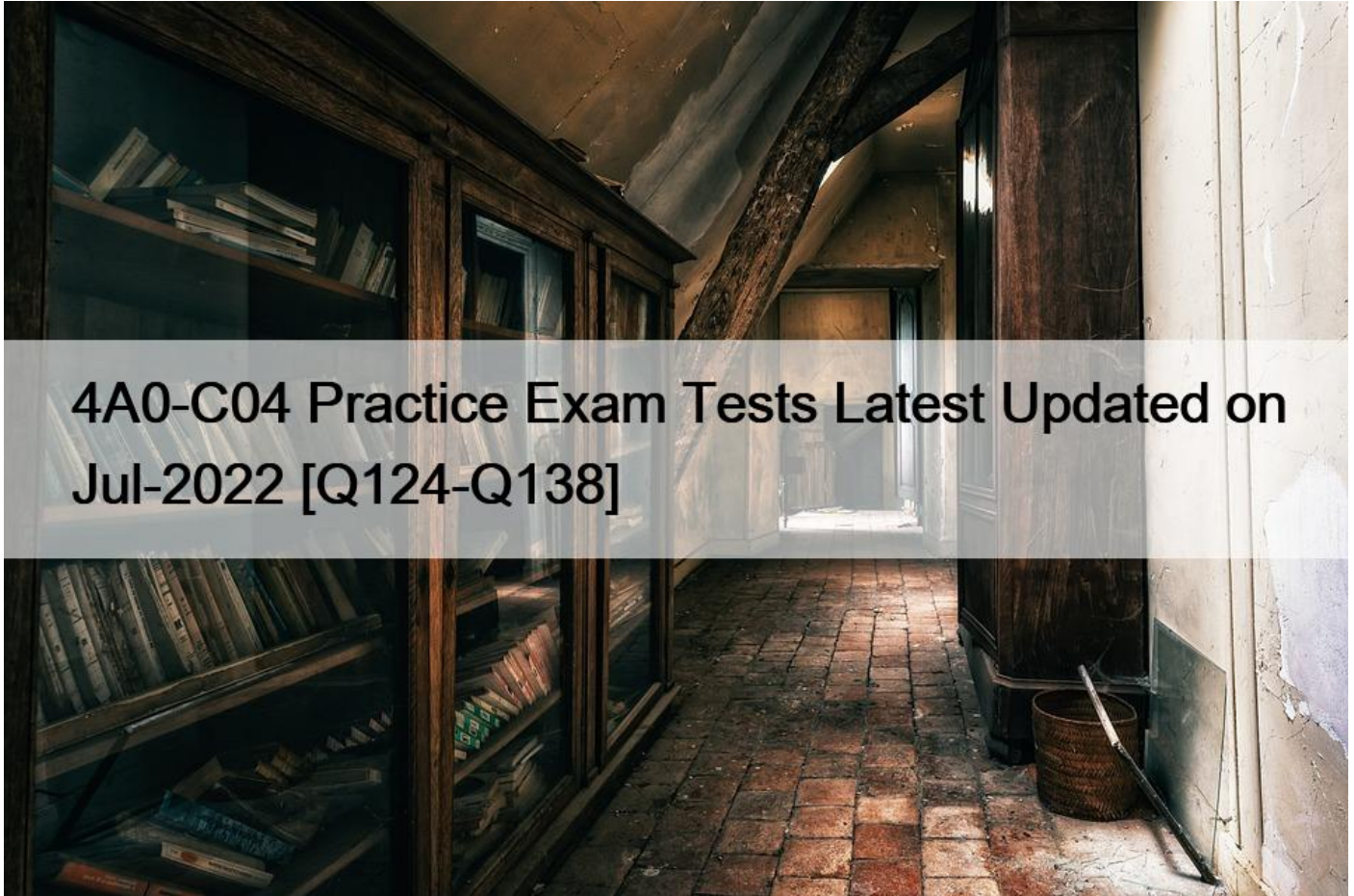


4A0-C04 Practice Exam Tests Latest Updated on Jul-2022 [Q124-Q138]



4A0-C04 Practice Exam Tests Latest Updated on Jul-2022 [Q124-Q138]

4A0-C04 Practice Exam Tests Latest Updated on Jul-2022
Pass 4A0-C04 Exam in First Attempt Guaranteed Dumps!

NO.124 Which of the following statements concerning OSPFv3 is false?

- * MD5 Authentication is not supported.
- * Router LSAs do not carry IPv6 prefix information
- * NSSA is not supported in OSPFv3.
- * OSPFv3 uses a 32-bit router ID.

NO.125 The configuration of an Nokia 7750 SR is given below. Router R1 has established BGP sessions with routers R2 and R3. Which of the following is TRUE?

```
R1>config>router>bgp# info
```

```
-----  
group "BGP-Peers"  
  peer-as 65540  
  neighbor 10.10.10.2  
    description "R2"  
  exit  
  neighbor 10.10.10.3  
    description "R3"  
    peer-as 65550  
  exit  
exit
```

- * Router R1 forms an iBGP session with router R2, and an eBGP session with router R3.
- * Router R1 forms iBGP sessions with routers R2 and R3.
- * Router R1 forms eBGP sessions with routers R2 and R3.
- * The types of BGP sessions with routers R2 and R3 cannot be determined.

NO.126 Which of the following statements regarding OSPF routing updates on a multi-access network segment is true?

- * In multi-access networks, a DR and BDR are elected only if there are more than two routers connected to the network segment.
- * In multi-access networks, a DR and BDR are elected only if the subnet masks on the router interfaces are less than /30
- * In multi-access networks, a DR and BDR are elected. To ensure resiliency, both the DR and BDR send link-state advertisements describing the network.
- * In multi-access networks, a DR and BDR are elected. The DR sends link-state advertisements describing the network.

NO.127 Which of the following about IS-IS Traffic Engineering on an Nokia 7750 SR is FALSE?

- * Traffic engineering information is carried in the extended TLVs.
- * Traffic engineering must be enabled on all IP/MPLS routers along the LSP path.
- * Traffic engineering information is stored in the opaque database,
- * Traffic engineering is required for constraint-based LSPs.

NO.128 What is the function of the Cluster_List attribute?

- * It is used for loop detection within the same cluster.
- * It is used for loop detection between clusters.
- * It is used for loop detection in a confederation.
- * It is used to identify the route reflectors within an AS.

NO.129 Which of the following is TRUE if the local state of BGP is OpenConfirm?

- * The local system has received a Keepalive message and is ready to exchange updates.
- * The local system is exchanging Update messages with its neighbor.
- * The local system has sent a Keepalive message to its neighbor and is waiting to receive one back.
- * The local system has sent an Open message to its neighbor and is waiting to receive one back.

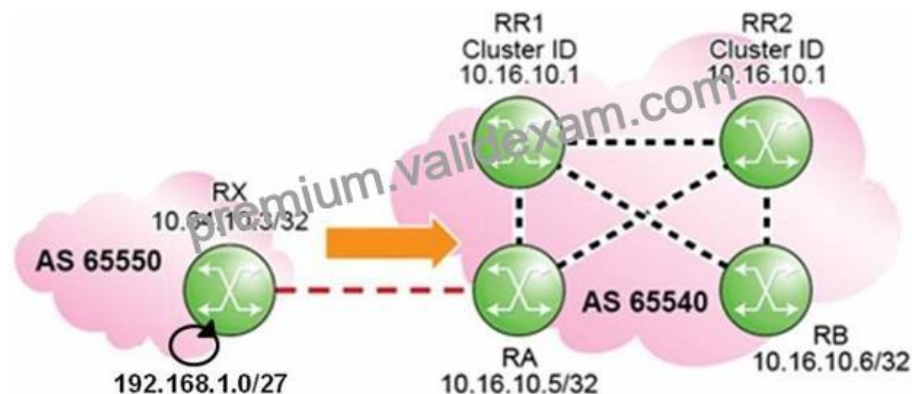
NO.130 Click the exhibit.



Assuming that none of the routers within AS 65200 is configured with next-hop-self, what will the BGP update for the 192.168.0.1/27 prefix contain when it arrives at router B?

- * AS Path of 65200 65100, Next Hop of router A.
- * AS Path of 65200 65100, Next Hop of router E.
- * AS Path of 65100, Next Hop of router E.
- * AS Path of 65100, Next Hop of router A.

NO.131 Click the exhibit.



Routers RR1 and RR2 are route reflectors with the same Cluster-ID. How does router RA treat the updates for prefix 192.168.1.0/27 received from routers RR1 and RR2?

- * Router RA prefers the update received from router RR1.
- * Router RA prefers the update received from router RR2.
- * Router RA flags both updates as invalid.
- * Router RA accepts both updates and flags them as used.

NO.132 What is the default priority value used for electing the DR on an Nokia 7750 SR running OSPF on an Ethernet?

- * Priority of 0
- * Priority of 1
- * Priority of 64
- * Priority of 255

NO.133 What is the purpose of configuring a triggered-policy on an Nokia 7750 SR?

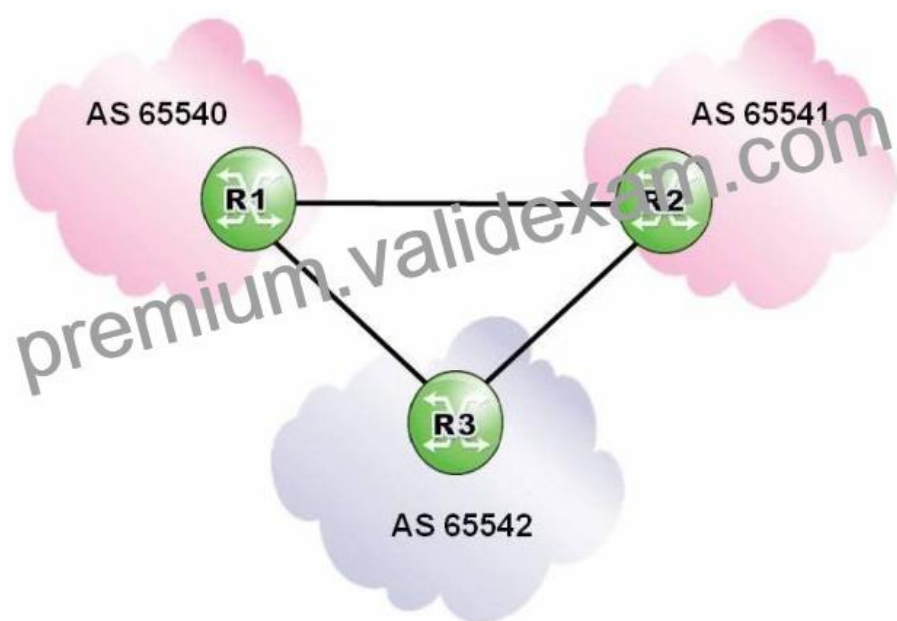
- * Policy changes are delayed until the peer router with the affected routes reboots.

- * Policy changes are delayed until route updates for affected BGP routes are received from peers.
- * Policy changes are delayed until BGP sessions are cleared or BGP is reset.
- * Policy changes are delayed until the router reboots.

NO.134 Consider a device that uses per-platform label space; which of the following fields is NOT contained in the LFIB?

- * Incoming label
- * Outgoing label
- * Incoming interface
- * Outgoing interface

NO.135 Click the exhibit.



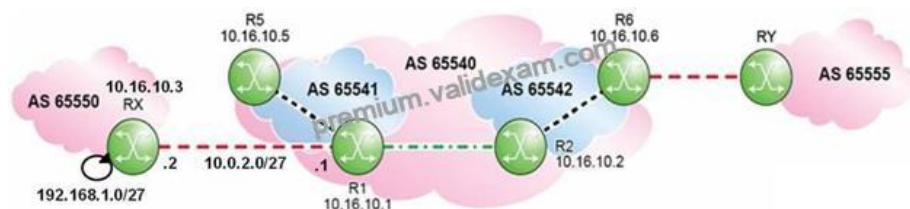
Router R3 is configured with an import policy to reject updates with an AS Path matching the regular expression `^65540;+65540;#8221;`. Which of the following regarding updates originating in AS 65540 is TRUE?

- * Router R3 rejects all updates originating in AS 65540.
- * Router R3 accepts updates received from router R1 and rejects updates transited through router R2.
- * Router R3 accepts updates transited through router R2 and rejects updates received from router R1.
- * Router R3 accepts updates from both routers R1 and R2.

NO.136 Which of the following prefix lists include prefixes 192.168.128.0/17 and 192.168.64.0/18?

- * Prefix list 192.168.0.0/16 through 18.
- * Prefix 192.168.0.0/17 longer.
- * Prefix list 192.168.0.0/17 through 18.
- * Prefix 192.160.0.0/13 longer.

NO.137 Click the exhibit.



Given the following configuration for router R1, what is the expected Next Hop for prefix 192.168.1.0/27 as seen on router R2?

```
R1>config>router>bgp# info
-----
group "eBGP"
  peer-as 65550
  neighbor 10.0.2.2
  exit
exit
group "Cont-eBGP"
  peer-as 65542
  neighbor 10.16.10.2
  exit
exit
group "Member-AS"
  next-hop-self
  neighbor 10.16.10.5
  peer-as 65541
  exit
exit
no shutdown
```

- * 10.0.2.1
- * 10.0.2.2
- * 10.16.10.1
- * 10.16.10.3

NO.138 By default, how does a VPLS handle a tagged frame received at the ingress of a null SAP on an Nokia 7750 SR?

- * The FCS is verified and kept in the customer frame. The VLAN tag is kept and transported over the network.
- * The FCS is verified and kept in the customer frame. The VLAN tag is removed for transport over the network.
- * The FCS is verified and removed from the frame. The VLAN tag is kept and transported over the network.
- * The FCS is verified and removed from the frame. The VLAN tag is removed for transport over the network.

Nokia Network Routing Specialist II (NRS II) Free Certification Exam Material from ValidExam with 300 Questions:
<https://www.validexam.com/4A0-C04-latest-dumps.html>